



WE KNOW THE WAY

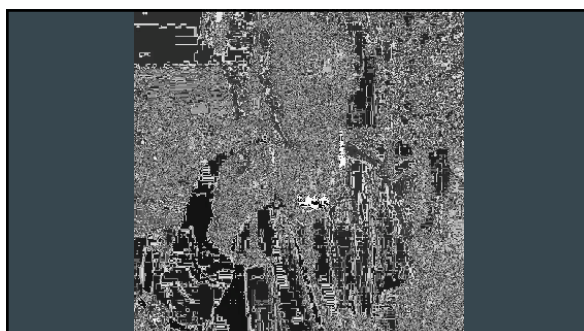
We read the wind and the sky
When the sun is high
We sail the length of sea
On the ocean breeze
At night we name every star
We know where we are
We know who we are, who we are

Aue, aue,
We set a course to find
A brand new island everywhere
we row
Aue, aue,
We keep our island in our mind
And...



GREETINGS

...
Kā Mihi



OUTLINE

- Background
- Socio Cultural, Socio Political perspectives
- Model of Practice
- Te Moananui a Kiwa

BACKGROUND



Ivala & Laufiso

- ✕ Samoa/Tonga, Samoa
- ✕ 1960: Eti Agnes Ivala
- ✕ 1961: Mikaele Filipo Laufiso
- ✕ Dunedin
- ✕ Six children
- ✕ Brockville
- ✕ Catholic



Philippa Agnes

- Second born
- Dunedin/NZ, raised
- Dunedin schooled
- Hiliako Vaoakakala Iaheto
 - Tokelau / Tonga
- Joachim Ivala Tahe Tevira
 - Tokelau / Tonga / Samoa



SOCIO CULTURAL, SOCIO POLITICAL PERSPECTIVES

Values & Beliefs

brockville brotherhood



Eti Ivala-Laufiso

- If you don't love the children – stay at home.
- Live life to the fullest



